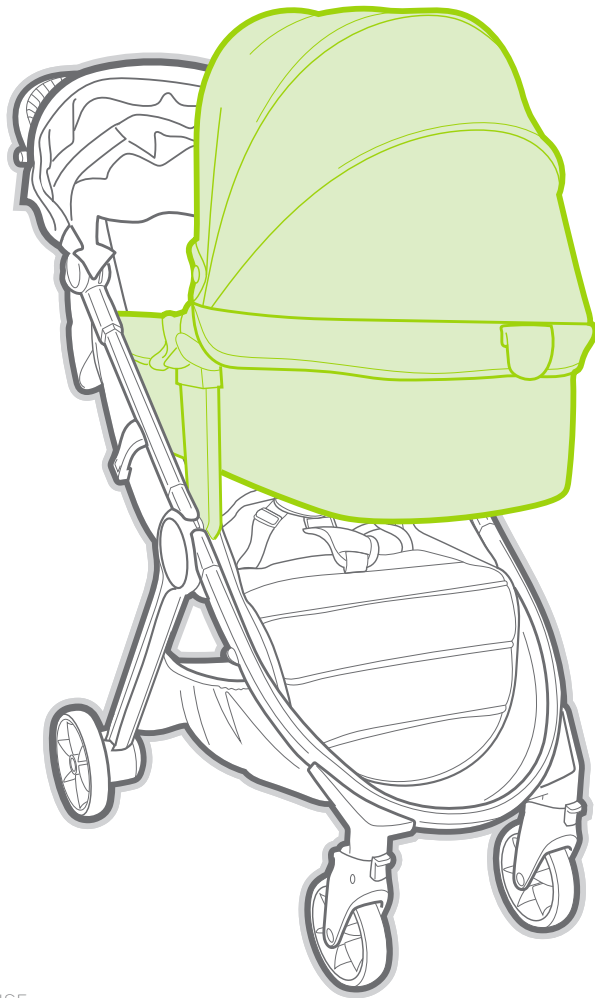


# baby jogger<sup>®</sup>

## carry cot

CITY  
TOUR™  
2

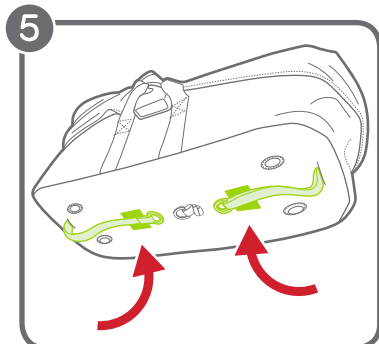
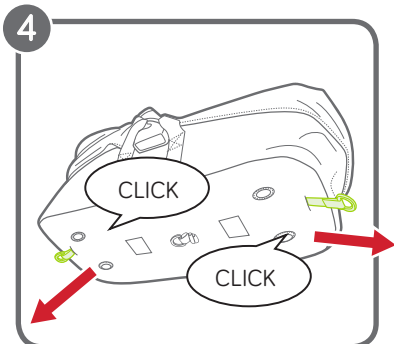
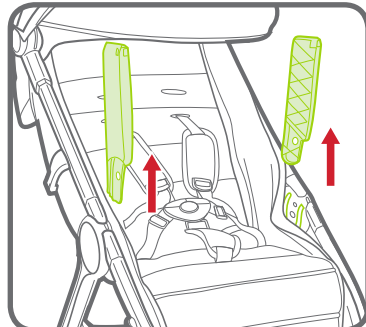
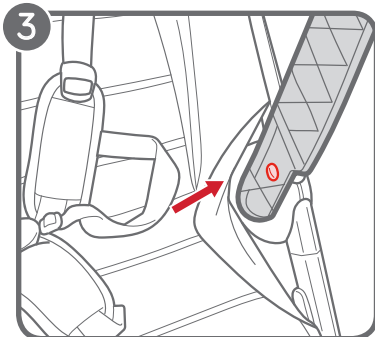
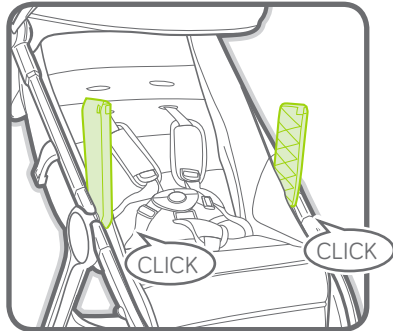
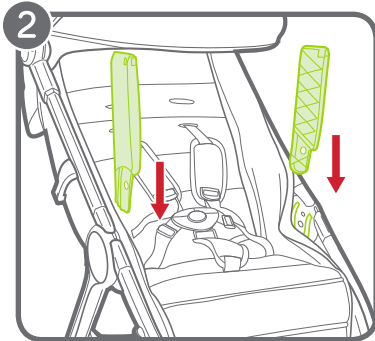
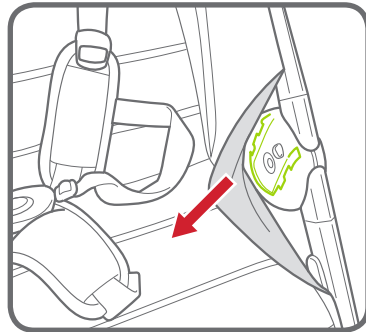
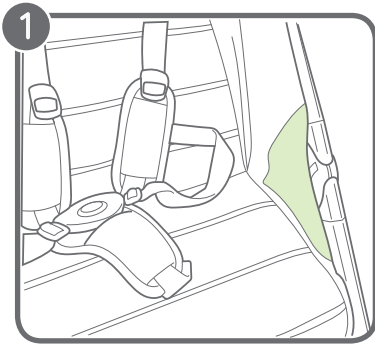


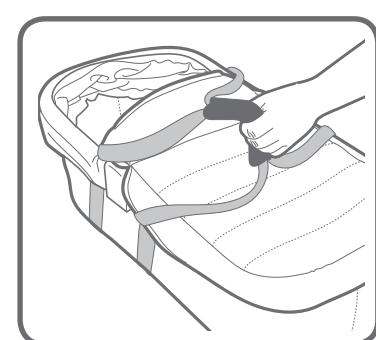
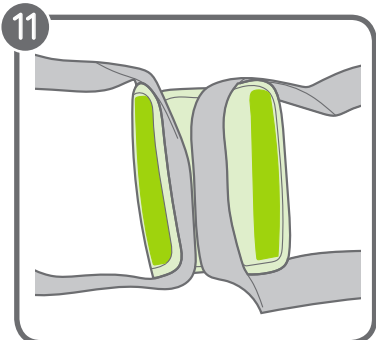
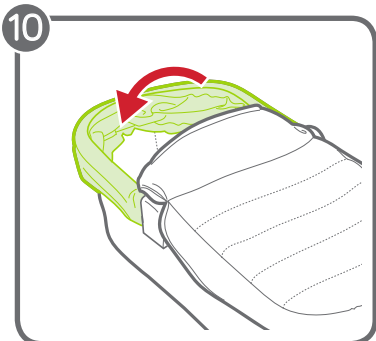
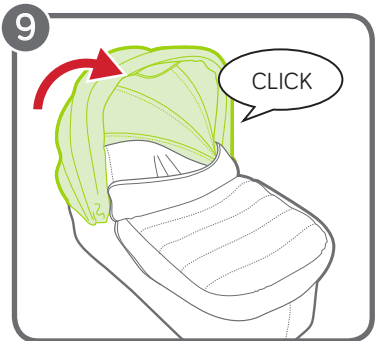
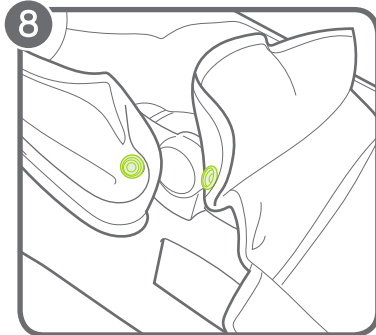
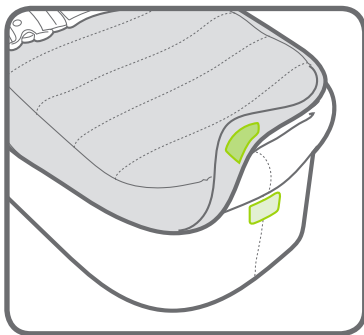
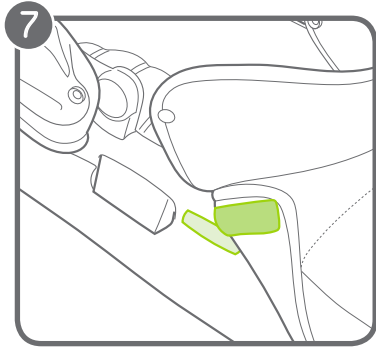
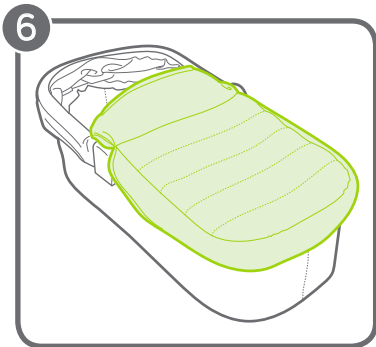
INSTRUCTIONS FOR USE

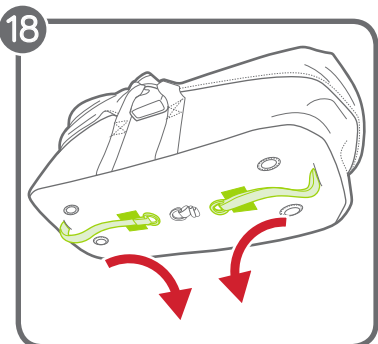
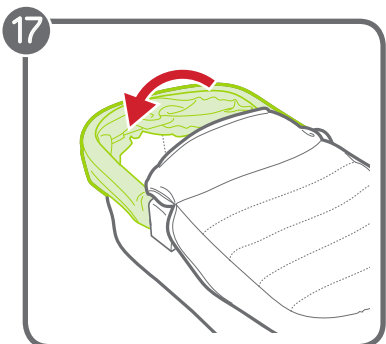
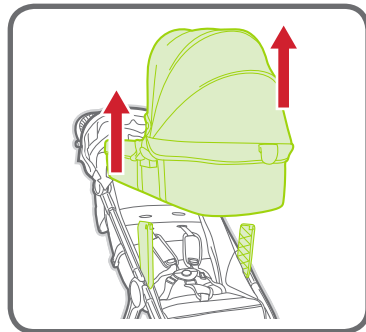
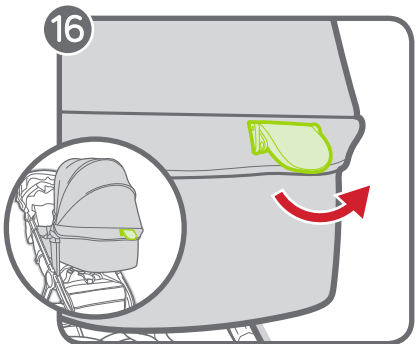
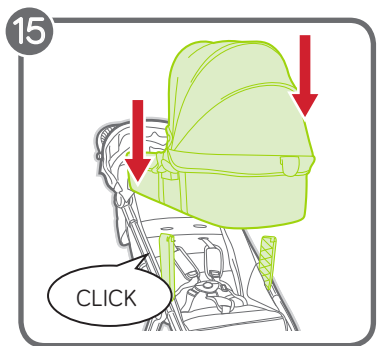
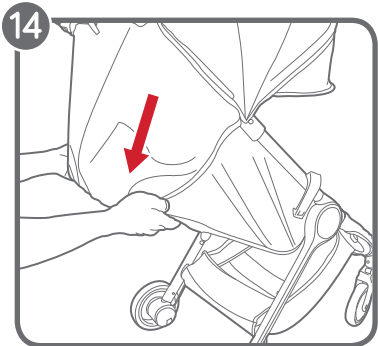
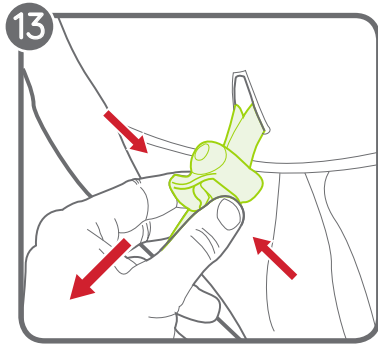
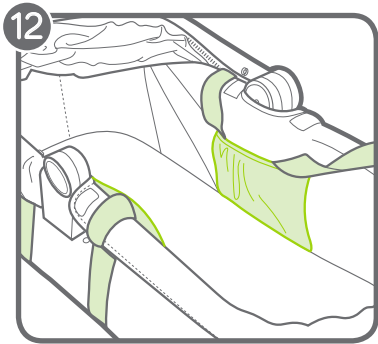
[babyjogger.com](http://babyjogger.com)

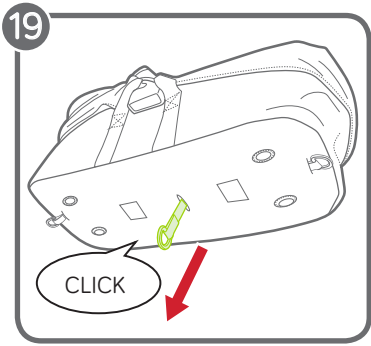
©2019 NWL0000908892C 1/19

**IMPORTANT:** Read carefully and keep for future reference. Your child's safety may be affected if you do not follow these instructions.









## WARNING

**IMPORTANT** - Read the instructions carefully before use and keep for future reference. Your child's safety may be affected if you do not follow these instructions.

### **WARNING:**

**FOLLOW ALL THE INSTRUCTIONS AND WARNINGS IN YOUR STROLLER'S INSTRUCTION MANUAL.**

- Never leave the child unattended.
- Do not use the carry cot if any part is torn, damaged, broken or missing.
- This product is suitable only for a child who cannot sit up unaided, roll over and cannot push itself up on its hands and knees. Maximum weight of the child: 9 kg.
- Use only on a firm, horizontal, level and dry surface.
- Do not let other children play unattended near the carry cot.
- NEVER use this product on a stand.
- Do not leave flexible carrying handles inside the carry cot.

### **ADDITIONAL SAFETY INFORMATION:**

- **SUFFOCATION HAZARD:** carry cot body can roll over on soft surfaces and suffocate child. NEVER place carrier on beds, sofas, or other soft surfaces.
- **FALL HAZARD:** Child's activity can move carry cot body. NEVER place carry cot body on counter tops, tables, or any other elevated surfaces.
- **STRANGULATION HAZARD:** Strings can cause strangulation! Do not place items with strings around a child's neck, such as hood strings or pacifier cords. Do not suspend strings over child's head or attach strings as toys.
- **NEVER** use this carry cot body to transport an infant in a motor vehicle.
- The head of the child in the carry cot should never be lower than the body of the child.

- Regularly inspect the handles and the bottom of the Carry cot body for signs of damage or excessive wear.
- Before carrying or lifting, make sure that the handle is in the correct position of use.
- This Carry cot includes a 20 mm (0.75") mattress. Do not use any mattress other than the one supplied with the Carry cot and do not add another one on top of it.
- To prevent injury, do not change or add any additional mattresses to the infant carrier.
- Do not place the carry cot near an open fire or other source of strong heat, such as electric bar fires, gas fires, etc.
- Use only replacement parts supplied or approved by the manufacturer.
- If a sheet is used with the pad, use only the one provided by the manufacturer or one specifically designed to fit the dimensions of the Carry cot body or mattress.
- Remove the mounting adapters before using the stroller with a seated child.
- **WARNING: DO NOT USE THIS BASSINET ONCE THE CHILD CAN SIT UP UNAIDED.**
- This bassinet should NEVER be used with any other chassis/product but the City Tour 2 or City Tour 2 Double.
- **TO AVOID INJURY OR DEATH: ALWAYS APPLY THE BREAKS WHENEVER THE CARRY COT/STROLLER IS STATIONARY.**
- **DO NOT LEAVE CHILDREN UNATTENDED.**
- **DO NOT CARRY EXTRA CHILDREN OR BAGS ON THIS CARRY COT/STROLLER.**
- **MAKE SURE CHILDREN ARE CLEAR OF ANY MOVING PARTS IN YOU ADJUST THE CARRY COT/STROLLER.**

## MOUNTING ADAPTERS

- 1 Before attaching anything to the accessory mounting slots, make sure the elastic fabric near the accessory mounting slots are not covering the slots.
- 2 Insert the ends of the mounting adapters into the accessory mounting slots. The mounting adapters are secure when they click into place.
- 3 To remove the mounting adapters, push the gray release button on each side of the mounting slots and pull the adapter upwards.

## UNFOLDING


- 4 From underneath the Carry cot body, pull the straps on each side of the carry cot body until the straps click into place. Assure that the mechanism is engaged properly by slightly pressing on the upper frame.
- 5 Attach the straps to the fastening strips to keep them secure.

## FOOT COVER

- 6 To attach the foot muff, place the foot muff over the Carry cot frame.
- 7 Attach the fastening strips on either side of the Carry cot body and on the front.
- 8 Attach the snaps on either side of the canopy.

## CANOPY


- 9 Raise the canopy until it clicks into place.

 **WARNING:** Before carrying or lifting, make sure that the canopy is locked into place.

- 10 To lower the canopy, push the canopy down.

## CARRY STRAPS


- 11 To use the carry straps, first place the ends of both straps into the carry handle. Then close the handle around the straps using the fastening strips.
- 12 To store the carry straps, undo the fastening strip inside each pocket and insert the carry strap into the pocket.

 **WARNING:** DO NOT store anything except the carry handles inside the storage pockets. ALWAYS store the carry handles inside the storage pockets when the carry handles are not in use.

## ATTACH TO STROLLER

- 13 First, recline the backrest by pinching the clamp behind the backrest, and slide it down to the lowest position.

- 14 Pull backrest down on both sides to match the clamp position.

 **WARNING:** When making adjustments to the stroller seat, make sure child's head, arms, and legs are clear of moving seat parts and stroller frame.

- 15 Align the black attachment brackets of the Carry cot body with the mounting adapter brackets.

**The Carry cot body can only be attached rear facing.** Firmly press down on the carry cot body until you hear it click into place. Gently pull up on the carry cot body to ensure it is locked in place.

- 16 To remove the carry cot body from the stroller: Lift the release lever on the back of the carry cot body and pull upward to remove.

## COLLAPSING THE CARRY COT

- 17 Lower the canopy.
- 18 From underneath the Carry cot body, remove the straps from the fastening strips.
- 19 Pull the strap in the middle of the carry cot body until the strap clicks and the carry cot body collapses.

## CARE AND MAINTENANCE

Mattress Cover & Foot Cover:

- Remove plastic & foam inserts from the mattress before washing.
- Machine wash separately using a warm gentle cycle and mild detergent.
- Do not bleach.
- Do not iron.
- Do not place fabric in the dryer. Lay flat to dry.

Carry cot Base, Canopy & Mattress Pad:

- Wipe clean using a damp cloth.
- Do not bleach.
- Do not iron.



Baby Jogger, LLC

6655 Peachtree Dunwoody Rd. NE • Atlanta, GA 30328  
1.800.241.1848 • [www.babyjogger.com](http://www.babyjogger.com)

Distributed in Australia By:  
The Amazing Baby Company  
7-9 Maurice Court • Nunawading VIC 3131 • Australia  
T: 1300.661.885 • F: 03.9873.1433  
[www.theamazingbabycompany.com.au](http://www.theamazingbabycompany.com.au)

Distributed in New Zealand By:  
Baby First Limited  
25 Nga Mahi Rd • Sockburn Christchurch, 8024 • New Zealand  
T: (64) 03.338.7613 • F: (64) 03 338 7615  
[www.babyfirst.co.nz](http://www.babyfirst.co.nz)